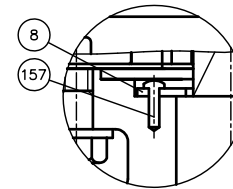
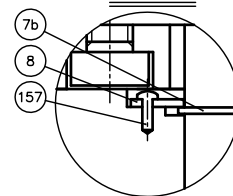


Part "A"
16"



Part "A"
18"-24"



DIMENSIONS TABLE

Nominal Size	d	ANSI Class 150				D	D ₁	D ₂	D ₃	L	H	H ₁	H ₂	H ₄	H ₅	A	A ₁	A ₂	Number of handle rotation	GEAR BOX TYPE
		C	n	h																
16" 400mm	15.98	21.25	16	1.12	24.41	18.50	9.25	11.81	6.65	18.03	12.40	13.78	4.25	15.35	10.71	-	3.91	9.5	TYPE 3	
18 450	17.80	22.75	16	1.25	26.18	20.67	13.39	15.75	7.05	19.57	13.19	14.57	5.00	17.44	12.83	2.97	4.11	13.75	AB1250N	
20 500	19.76	25.00	20	1.25	28.35	22.64	13.39	15.75	7.48	20.75	14.37	15.75	5.00	18.62	12.83	2.97	4.11	13.75		
24 600	23.74	29.50	20	1.38	32.01	27.01	13.39	15.75	8.23	23.31	16.69	18.31	5.00	21.18	12.83	2.97	4.11	13.75		

Unit : inch

Note. The shape and appearance of assembly differ a little with nominal size compared to this drawing.

No.	DESCRIPTION	QTY.	MATERIAL	REMARKS
216	SCALE PLATE	1	STAINLESS STEEL (SUS304)	
209	SPRING PIN	1	STAINLESS STEEL (SUS304)	
208	HANDLE GRIP	1	NYLON etc.	
207	HANDLE (C)	1	CAST IRON (FC250)	Polyurethane Coat.
157	SCREW (F)	4	STAINLESS STEEL (SUS304)	
28	BOLT (C)	4	STAINLESS STEEL (SUS304)	
26	GASKET (A)	1	EPDM	16"
25	GEAR BOX	1	CAST IRON (FC250) etc. (Polyurethane Coat.)	16" (ROTORK) 18"-24"
8	STEM HOLDER (A)	1	PP	
7b	SNAPRING	1	STAINLESS STEEL (SUS304)	18"-24"
7a	KEY (A)	1	CARBON STEEL (S45C)	18"-24"
7	STEM	1	□ STAINLESS STEEL (SUS403) □ STAINLESS STEEL (SUS316)	
6	O-RING (C)	1	□ EPDM	
5	O-RING (B)	2	□FKM	
4	O-RING (A)	2	□Others	
3	SEAT	1	()	
2a	DISC INSERT	1	AC4C	18"-24"
2	DISC	1	□PP □PVPDF	
1	BODY	1	PDCPD	
BUTTERFLY VALVE (TYPE56D,75D) ASS'Y SIDE GEAR TYPE: ANSI Class 150 TYPE 56D: 16" (400mm) TYPE 75D: 18" (450mm) ~24" (600mm)				
ITEM	DATE		SCALE	
DRAWN	M.Iwakiri	DEC.21.2018		
CHECKED	H.Kawano	DRAWING No.		
APPROVED	K.Koushou	BF-M1013AE		
SPECIAL ORDER No.				
ASAHI YUKIZAI CORPORATION				