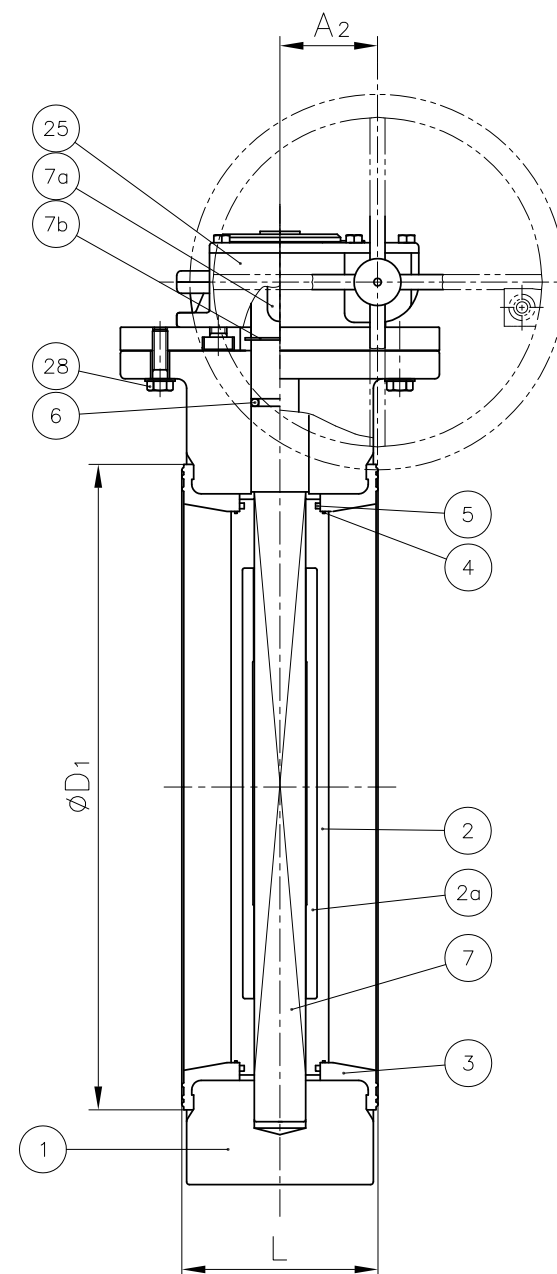
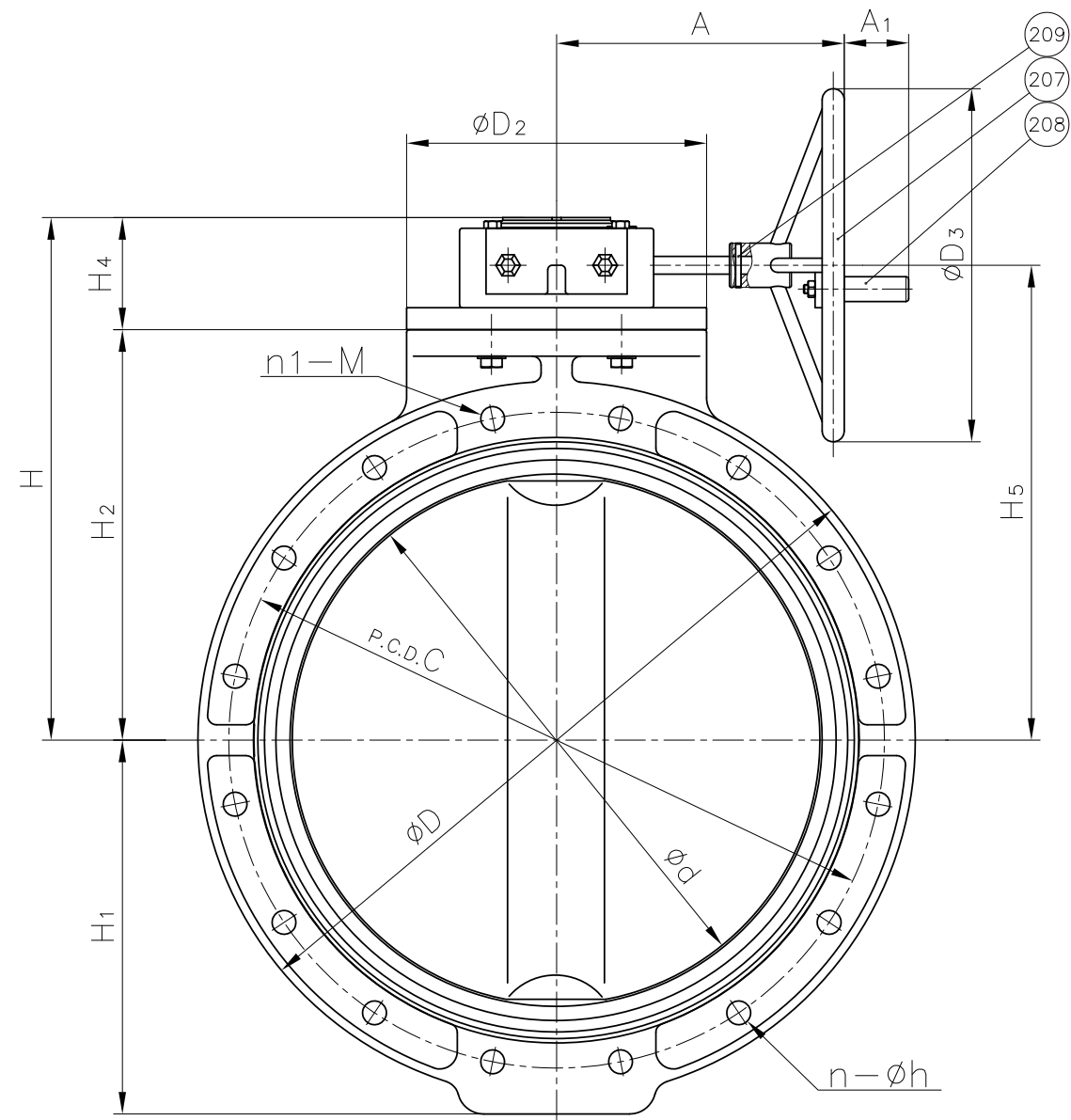


Nominal Size	M	n	Q'TY OF INSERTED METAL		TOTAL (2xn1)	l1	l2
			UPPER	LOWER			
400mm	16"	M24	14	2x2	4	36	24
450	18	M24	16	2x2	8	36	24
500	20	M24	16	2x2	8	36	24
600	24	M30	20	2x2	8	43	30



DIMENSIONS TABLE

Nominal Size	d	JIS 10K						D	D1	D2	D3	L	H	H1	H2	H4	H5	A	A1	A2	Number of handle rotation	GEAR BOX TYPE
		C	n	h	n1	M																
400mm	16"	406	510	14	27	2	M24	620	470	235	300	169	458	315	350	108	390	272	—	99.2	9.5	TYPE 3
450	18	452	565	16	27	4	M24	665	525	340	400	179	497	335	370	127	443	326	75.5	104.5	13.75	AB1250N
500	20	502	620	16	27	4	M24	720	575	340	400	190	527	365	400	127	473	326	75.5	104.5	13.75	
600	24	603	730	20	33	4	M30	813	686	340	400	209	592	424	465	127	538	326	75.5	104.5	13.75	

Note. The shape and appearance of assembly differ a little with nominal size compared to this drawing.

216	SCALE PLATE	1	STAINLESS STEEL (SUS304)	
209	SPRING PIN	1	STAINLESS STEEL (SUS304)	
208	HANDLE GRIP	1	NYLON etc.	
207	HANDLE (C)	1	CAST IRON (FC250)	Polyurethane Coat.
28	BOLT (C)	4	STAINLESS STEEL (SUS304)	
26	GASKET (A)	1	EPDM	400mm
25	GEAR BOX	1	PLASTIC etc.	400mm
			CAST IRON (FC250) etc. (Polyurethane Coat.)	(ROTORK) 450mm-600mm
7b	SNAP RING	1	STAINLESS STEEL (SUS304)	450mm
7a	KEY (A)	1	CARBON STEEL (S45C)	
7	STEM	1	STAINLESS STEEL (SUS403)	
6	O-RING (C)	1	□EPDM	
5	O-RING (B)	2	□FKM	
4	O-RING (A)	2	□Others	
3	SEAT	1	()	
2a	DISC INSERT	1	AC4C	450mm-600mm
2	DISC	1	□PP □PVDF	
1b	INSERTED METAL OF BODY	4	COPPER ALLOY (C3604)	400mm
		8	COPPER ALLOY (C3604)	450mm-600mm
1	BODY	1	PDCPD	
No.	DESCRIPTION	QTY.	MATERIAL	REMARKS

ITEM	BUTTERFLY VALVE (TYPE56D,75D) ASS'Y SIDE GEAR TYPE: JIS 10K TYPE 56D: 400mm (16") TYPE 75D: 450mm (18") ~600mm (24")			
DRAWN	M.Yamamoto	DATE	SCALE	
CHECKED	H.Kawano	DEC.12.2012	DRAWING No.	
APPROVED	H.Kouroggi	BF-M1013JE		△
SPECIAL ORDER No.	ASAHI YUKIZAI CORPORATION			