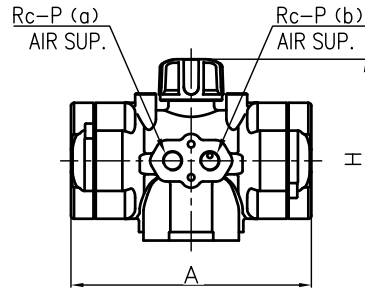


Actuator Shape (AR032,AR040)



DIMENSIONS TABLE

Nominal Size	FLANGE END							SOCKET END						THREADED END			SPIGOT END										
	DIN PN10							PVC, C-PVC			PP,PVDF						PVC			PP, PVDF							
	d	D	C	n	h	L	t	d1	l	L	d1	d1'	l	L	d2	l	PVC C-PVC	PP PVDF	L	d3	d3'	l	d3	l	PP	PVDF	L
15mm	1/2"	15	95	65	4	14	130	12	20	16	102	19.5	19.3	14.5	99	Rp 1/2	15	102	100	20	15	18.5	20	18.5	2.5	1.9	124
20	3/4"	20	105	75	4	14	150	14	25	19	119	24.5	24.3	16	113	Rp 3/4	17	120	119	25	20	24	25	22	2.7	1.9	144
25	1"	25	115	85	4	14	160	14	32	22	131	31.5	31.3	18	123	Rp 1	20	131	130	32	25	24.5	32	22.5	3.0	2.4	154
32	1 1/4"	32	140	100	4	18	180	16	40	26	150	39.45	39.2	20.5	139	Rp 1 1/4	22	150	146	40	31	28	40	26	3.7	2.4	174
40	1 1/2"	40	150	110	4	18	200	16	50	31	164	49.45	49.2	23.5	149	Rp 1 1/2	25	163	160	50	40	34	50	32	4.6	3.0	194
50	2"	51	165	125	4	18	230	16	63	38	197	62.5	62.1	27.5	176	Rp 2	28	197	194	63	51	38	63	36	5.8	3.0	224

MODEL CLASSIFICATION TABLE

TYPE	MATERIAL
21ALPHA	PVC C-PVC
21	PP PVDF

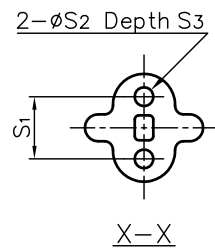
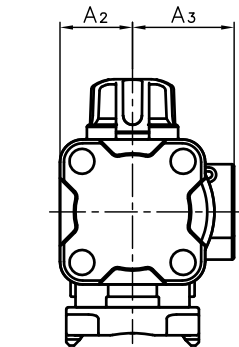
Unit: mm

Nominal Size	D1	H	H1	A	A2	A3	S1	S2	S3	P	ACTUATOR TYPE	
15mm	1/2"	48	109.5	29	94	22.5	32	19	7.3	11	1/8	AR032DA10NN
20	3/4"	60	116	35	94	22.5	32	19	7.3	11	1/8	AR032DA11NN
25	1"	70	123	39	94	22.5	32	19	7.3	11	1/8	AR032DA11NN
32	1 1/4"	82	143.5	47	116	28	38	30	9	15	1/8	AR040DA20NN
40	1 1/2"	100	174.5	55	147	35	49	30	9	15	1/4	AR050DA30NN
50	2"	126	186	66	147	35	49	30	9	15	1/4	AR050DA30NN

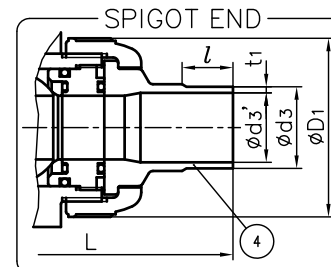
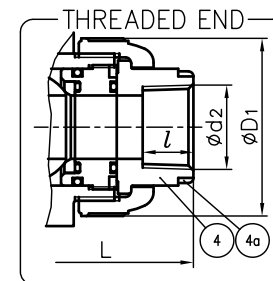
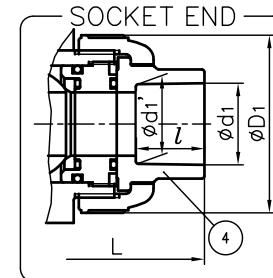
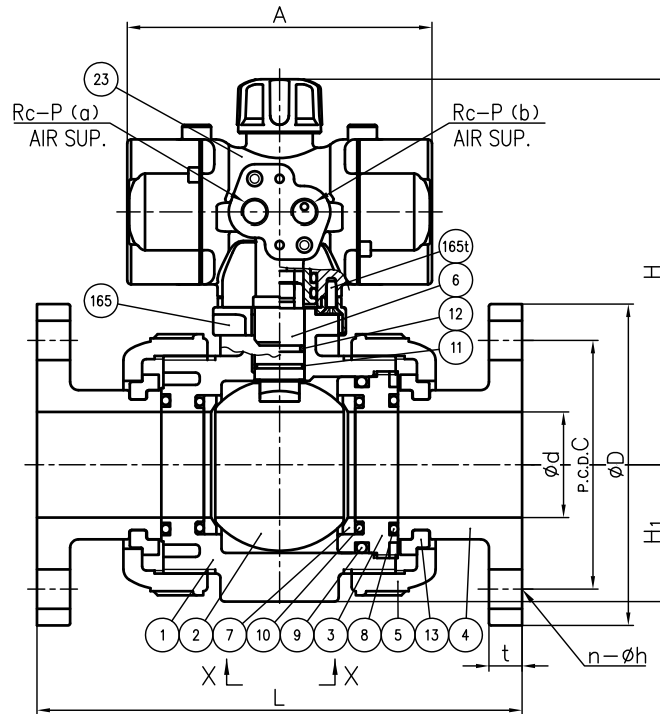
NOTE.

- Operation of permission pressure: 0.4~0.7MPaG
Valve open : (a) Exhaust, (b) Supply
Valve shut : (a) Supply, (b) Exhaust
- The shape and appearance of assembly differ a little with nominal size compared to this drawing.

FLANGE END



(Detail of Holes for Metallic Insert)



No.	DESCRIPTION	QTY.	MATERIAL	REMARKS
4a	RING	2	STAINLESS STEEL (SUS304)	Used for C-PVC Body, Threaded End: 15~25mm
165t	TAPPING SCREW (No.165)	2	STAINLESS STEEL (SUS304)	
165	BASE PLATE	1	PPG	
23	ACTUATOR	1	PPG etc.	
13	STOP RING	2	PVDF	Used for Flanged End
12	O-RING (E)	1		
11	O-RING (D)	1	□EPDM	
10	O-RING (C)	2	□FKM	
9	O-RING (B)	1	□Others	
8	O-RING (A)	2	()	
7	SEAT	2	PTFE	
6	STEM	1		
5	UNION NUT	2		
4	END CONNECTOR	2	□PVC □C-PVC	
3	CARRIER	1	□PP	
2	BALL	1	□PVDF	
1	BODY	1		

ITEM	BALL VALVE (TYPE21-21ALPHA) PNEUMATIC ACTUATED MODEL TYPE AR ASS'Y DOUBLE ACTING			
	DIN: □FLANGED END, □SOCKET END, □THREADED END, □SPIGOT END 15mm (1/2") ~ 50mm (2")			
DRAWN	E.Ozaki	DATE	SCALE	
CHECKED	H.Kawano	JUL.05.2018		
APPROVED	K.Kousyou	DRAWING No.		
		IB-AA261DE		⚠
SPECIAL ORDER No.	ASAHI YUKIZAI CORPORATION			