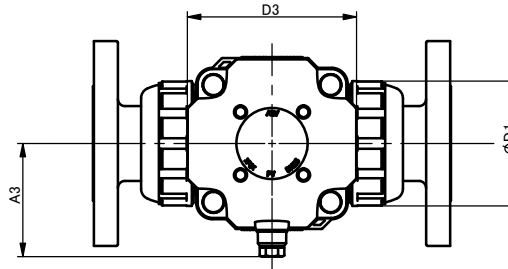
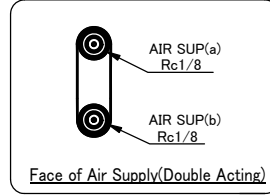
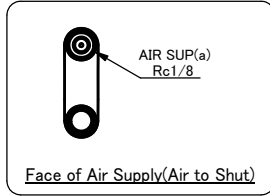


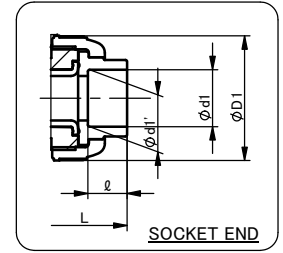
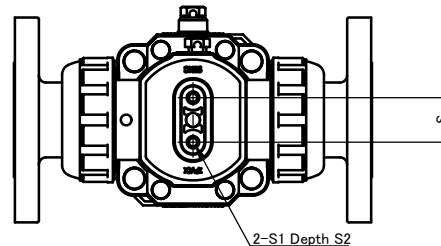
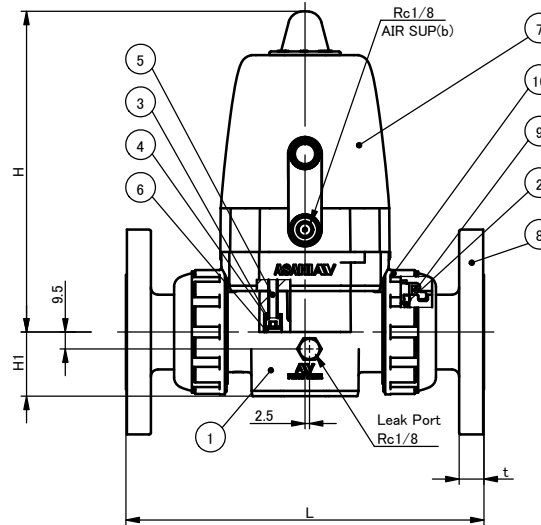
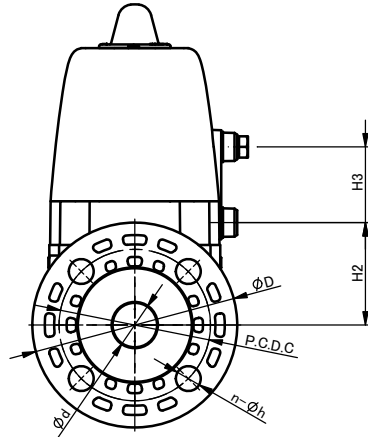
DIMENSIONS TABLE

Unit:mm

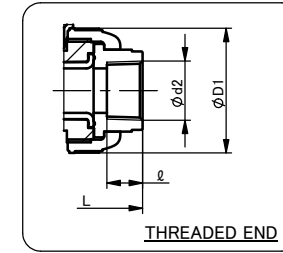
NOMINAL SIZE	FLANGED END																		SOCKET END			THREADED END			SPIGOT END					A3			S	S1	S2
	DIN PN10										PVC			PP			PVC			PP			DOUBLE ACTING	AIR TO OPEN	AIR TO SHUT										
	d	D	C	n	h	L	t	d1	ℓ	L	d1	d1'	ℓ	L	d2	ℓ	L	d3	d3'	ℓ	d3	ℓ				t1	L	D1	D3	H	H1	H2			
25mm 1"	25	115	85	4	14	201	14	32	22	172	31.5	31.3	18	164	Rp 1	20	171	32	25	24.5	32	22.5	3.0	195	70	95	180	36	57.5	42.5	57.5	63.5	25	M6	7



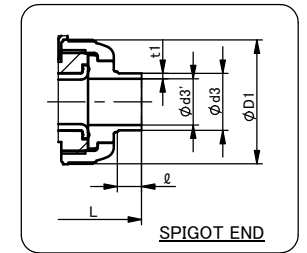
AIR TO OPEN



SOCKET END



THREADED END



SPIGOT END

NOTE.

- Operation of permission pressure
 Double Acting : 0.3~0.4MPa G
 Air to Open , Air to Shut : 0.4~0.6MPa G
- Double Acting , Valve Open : Port (a) Exhaust Port (b) Supply
 Valve Shut : Port (a) Supply Port (b) Exhaust
- Air to Open , Valve Open : Port (b) Supply
 Valve Shut : Port (b) Exhaust
- Air to Shut , Valve Open : Port (a) Exhaust
 Valve Shut : Port (a) Supply

No.	DESCRIPTION	QTY.	MATERIAL	REMARKS
10	Union nut	2	PVC	
9	Stop Ring	2	PVDF	Used for Flanged end
8	End connector	2	□PVC □PP	Wetted parts
7	Actuator	1	PPG etc.	
6	Rubber cap	4	EPDM	
5	Bolt	4	SUS304	
4	Spring washer	4	SUS304	
3	Washer	4	SUS304	
2	Tube	1	EPDM	Wetted parts
1	Body	1	PVC	

ITEM	PINCH VALVE (TYPE01) PNEUMATIC ACTUATED MODEL TYPE AX ASS'Y <input type="checkbox"/> DOUBLE ACTING <input type="checkbox"/> AIR TO OPEN <input type="checkbox"/> AIR TO SHUT DIN : <input type="checkbox"/> FLANGED END, <input type="checkbox"/> SOCKET END, <input type="checkbox"/> THREADED END, <input type="checkbox"/> SPIGOT END 25mm (1")		
MODEL No.			
DRAWN	E. Ermei	DATE	SCALE
CHECKED	T. Iwamoto	Feb. 10. 2021	~
APPROVED	K. Koushou	DRAWING No.	
WEIGHT	2.10kg	SHEET	1
SPECIAL ORDER No.	PV-AA001DE		
ASAHI YUKIZAI CORPORATION			