

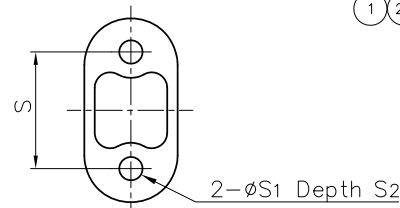
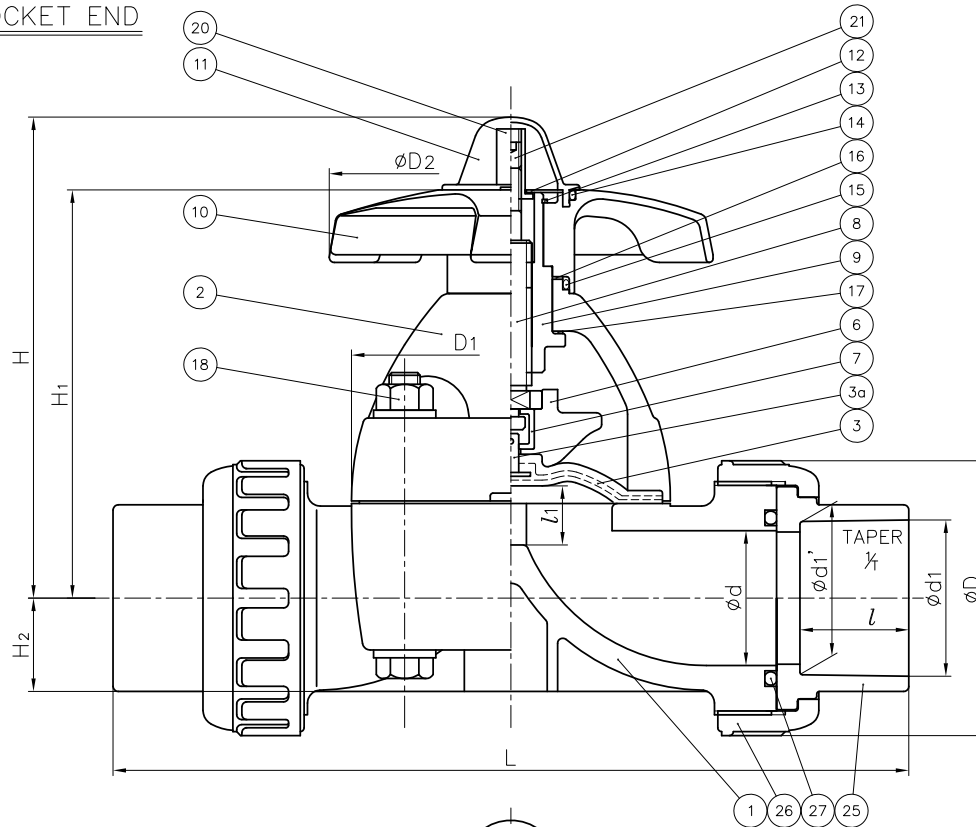
DIMENSIONS TABLE

UNIT : mm

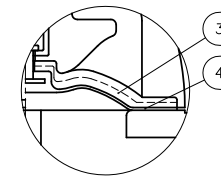
NOMINAL SIZE	SOCKET END										THREADED END													
	PVC, C-PVC					PP					d2	l	L		D	D1	D2	l1 (LIFT)	H	H1	H2	S	S1	S2
	d1	l	l1	L	d1'	d1'	l	L	PVC C-PVC	PP PVDF														
15mm 1/2"	16	22.11	20	1/4	134	21.2	20.2	20	134	Rc 1/2	15	128	128	48	54x66	100	10	104	86	19.5	25	7	13	
20 3/4	20	26.13	24	1/4	156	26.2	25.2	23	154	Rc 3/4	17	148	148	60	54x66	100	10	106	88	17.5	25	7	13	
25 1	25	32.16	27	1/4	186	33.0	32.0	25	182	Rc 1	20	172	172	70	67x80	100	12	111	93	18.5	25	7	13	
32 1 1/4	32	38.19	30	1/4	200	-	-	-	-	Rc 1 1/4	22	188	188	82	67x80	100	12	116	97	22.5	25	7	13	
40 1 1/2	40	48.21	37	1/4	271	47.0	46.0	28	253	Rc 1 1/2	25	245	245	100	108x108	156	21	177	144	27.5	45	9	15	
50 2	52	60.25	42	1/4	303	59.0	58.0	28	275	Rc 2	28	281	278	106	123x123	156	25	191	158	36	45	9	15	

- NOTE. 1. The shape and appearance of assembly differ a little with nominal size compared to this drawing.
 2. Diaphragms except EPDM and PTFE are available in FKM, VIFLON-C (FKM-C), VIFLON-F (FKM-F), CSM and NBR when required.

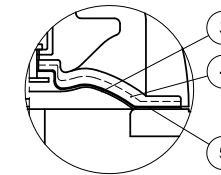
SOCKET END



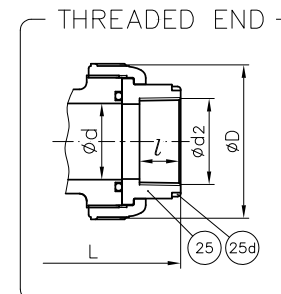
(Detail of Holes for) Metallic Insert.



In case material of diaphragm is PTFE.



In case material of diaphragm is PTFE with cushion cover.



27	O-RING (C)	2	<input type="checkbox"/> EPDM <input type="checkbox"/> Others ()	
25d	RING	2	STAINLESS STEEL (SUS304)	Used for C-PVC Body, Threaded End : 15~25mm
21	SCREW	1	Cr.Mo.STELL (SOM435)	
20	STOPPER (A)	1	COPPER ALLOY (C3604)	
18	BOLT · NUT (A)	4Sets	STAINLESS STEEL (SUS304)	
17	THRUST RING (B)	1	UHMWPE	
16	THRUST RING (A)	1	UHMWPE	
15	O-RING (B)	1	EPDM	
14	O-RING (A)	1	EPDM	
13	RETAINING RING-C TYPE	1	STAINLESS STEEL (SUS304)	
12	NAME PLATE	1	PVC	
11	GAUGE COVER	1	PC	
10	HAND WHEEL	1	PP	
9	SLEEVE	1	COPPER ALLOY (C3604)	
8	STEM	1	COPPER ALLOY (C3604)	
7	JOINT	1	STAINLESS STEEL (SUS304)	
6	COMPRESSOR	1	PVDF	
5	CUSHION COVER	1	<input type="checkbox"/> Nothing <input type="checkbox"/> PVDF	Used for PTFE Diaphragm
4	CUSHION	1	EPDM	
3a	INSERTED METAL OF DIAPHRAGM	1	STAINLESS STEEL (SUS304)	
3	DIAPHRAGM	1	<input type="checkbox"/> EPDM <input type="checkbox"/> PTFE <input type="checkbox"/> Others ()	
26	UNION NUT	2	BODY · UNION NUT / BONNET END CONNECTOR	
25	END CONNECTOR	2	<input type="checkbox"/> PVC/PVC <input type="checkbox"/> C-PVC/PP <input type="checkbox"/> PP/PP	
2	BONNET	1	<input type="checkbox"/> PVDF/PPG <input type="checkbox"/> PVDF/PVDF	
1	BODY	1	<input type="checkbox"/> PVDF/PVDF	
No.	DESCRIPTION	QTY.	MATERIAL	REMARKS

ITEM	TRUE UNION DIAPHRAGM VALVE (TYPE 14) ASS'Y JIS : <input type="checkbox"/> SOCKET END, <input type="checkbox"/> THREADED END 15mm (1/2") ~ 50mm (2")		
DRAWN	E.Emmei	DATE	SCALE
CHECKED	H.Kawano	FEB.12.2019	~
APPROVED	K.Koushou	DRAWING No.	
		T1-M1001JE	
SPECIAL ORDER No.	ASAHYUKIZAI CORPORATION		