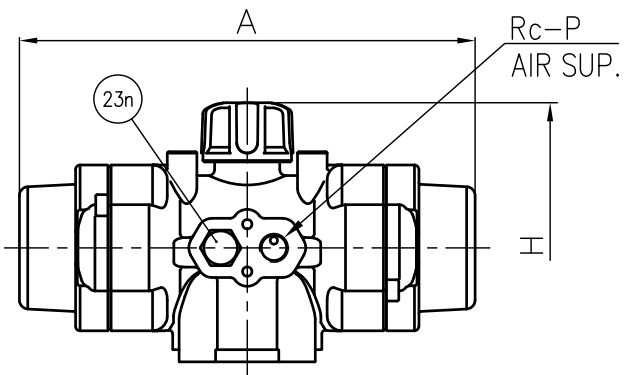


Actuator Shape (AR040)



DIMENSIONS TABLE

Nominal Size	FLANGE END								SOCKET END						THREADED END				
	ANSI Class 150								PVC, C-PVC			PP,PVDF			L				
	ASTM SCH80																		
	d	D	C	n	h	L	t		d ₁	d ₁ '	l	L	d ₁	l	L	d ₂	l	PVC C-PVC	PP PVDF
1/2"	15mm	0.59	3.50	2.38	4	0.62	5.63	0.47	0.848	0.836	0.875	4.45	0.83	0.87	4.41	1/2 - 14 NPT	0.59	4.02	3.94
3/4"	20	0.79	3.88	2.75	4	0.62	6.77	0.55	1.058	1.046	1.000	5.08	1.03	1.00	5.00	3/4 - 14 NPT	0.67	4.72	4.69
1"	25	0.98	4.25	3.12	4	0.62	7.36	0.55	1.325	1.310	1.125	5.71	1.30	1.13	5.63	1 - 11 1/2 NPT	0.79	5.16	5.12
1 1/4"	32	1.26	4.62	3.50	4	0.62	7.48	0.63	1.670	1.655	1.250	6.46	1.65	1.25	6.30	1 1/4 - 11 1/2 NPT	0.87	5.91	5.75
1 1/2"	40	1.57	5.00	3.88	4	0.62	8.35	0.63	1.912	1.894	1.375	7.24	1.89	1.37	7.05	1 1/2 - 11 1/2 NPT	0.98	6.42	6.30
2"	50	2.01	6.00	4.75	4	0.75	9.21	0.63	2.387	2.369	1.500	8.23	2.36	1.50	8.03	2 - 11 1/2 NPT	1.10	7.76	7.64

MODEL CLASSIFICATION TABLE

TYPE	MATERIAL
21ALPHA	PVC C-PVC
21	PP PVDF

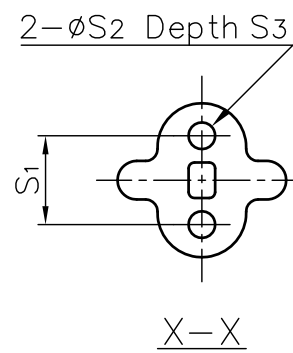
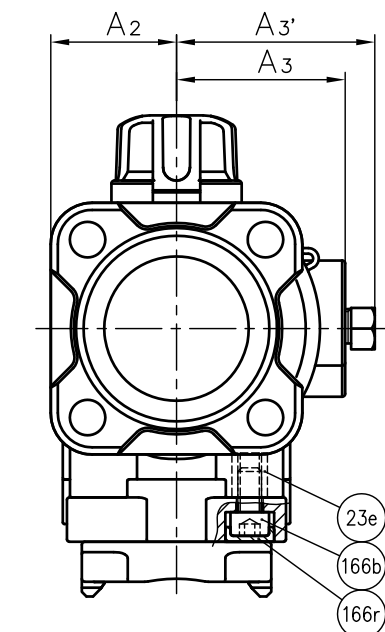
Unit: inch

Nominal Size	D ₁	H	H ₁	A	A ₂	A ₃	A ₃ '	S ₁	S ₂	S ₃	P	ACTUATOR TYPE		
												Air to open	Air to shut	
1/2"	15mm	1.89	5.16	1.14	6.06	1.10	1.50	1.81	0.75	0.29	0.43	1/8	AR040NC20SN	AR040NO20SN
3/4"	20	2.36	5.41	1.38	6.06	1.10	1.50	1.81	0.75	0.29	0.43	1/8	AR040NC20SN	AR040NO20SN
1"	25	2.76	5.69	1.54	6.06	1.10	1.50	1.81	0.75	0.29	0.43	1/8	AR040NC20SN	AR040NO20SN
1 1/4"	32	3.23	7.01	1.85	7.64	1.38	1.93	2.32	1.18	0.35	0.59	1/4	AR050NC30SN	AR050NO30SN
1 1/2"	40	3.94	8.21	2.17	10.00	1.67	2.24	2.64	1.18	0.35	0.59	1/4	AR063NC40SN	AR063NO40SN
2"	50	4.96	8.66	2.60	10.00	1.67	2.24	2.64	1.18	0.35	0.59	1/4	AR063NC40SN	AR063NO40SN

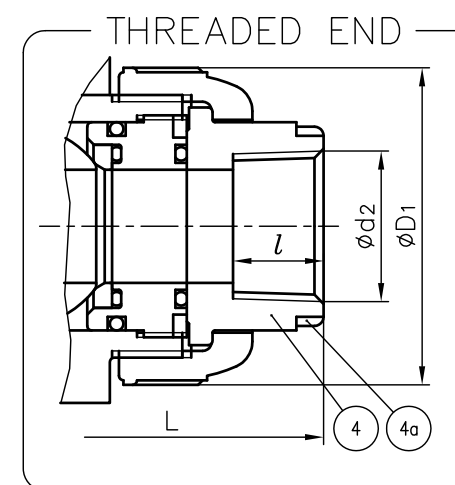
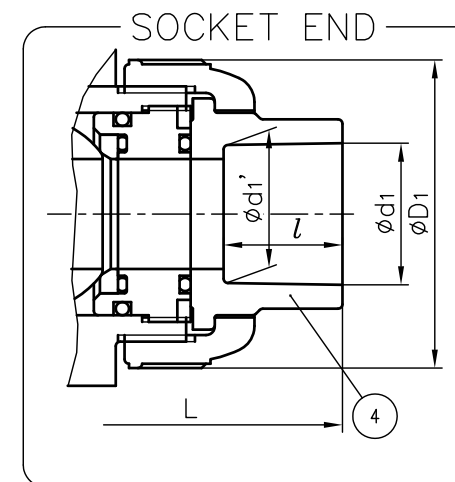
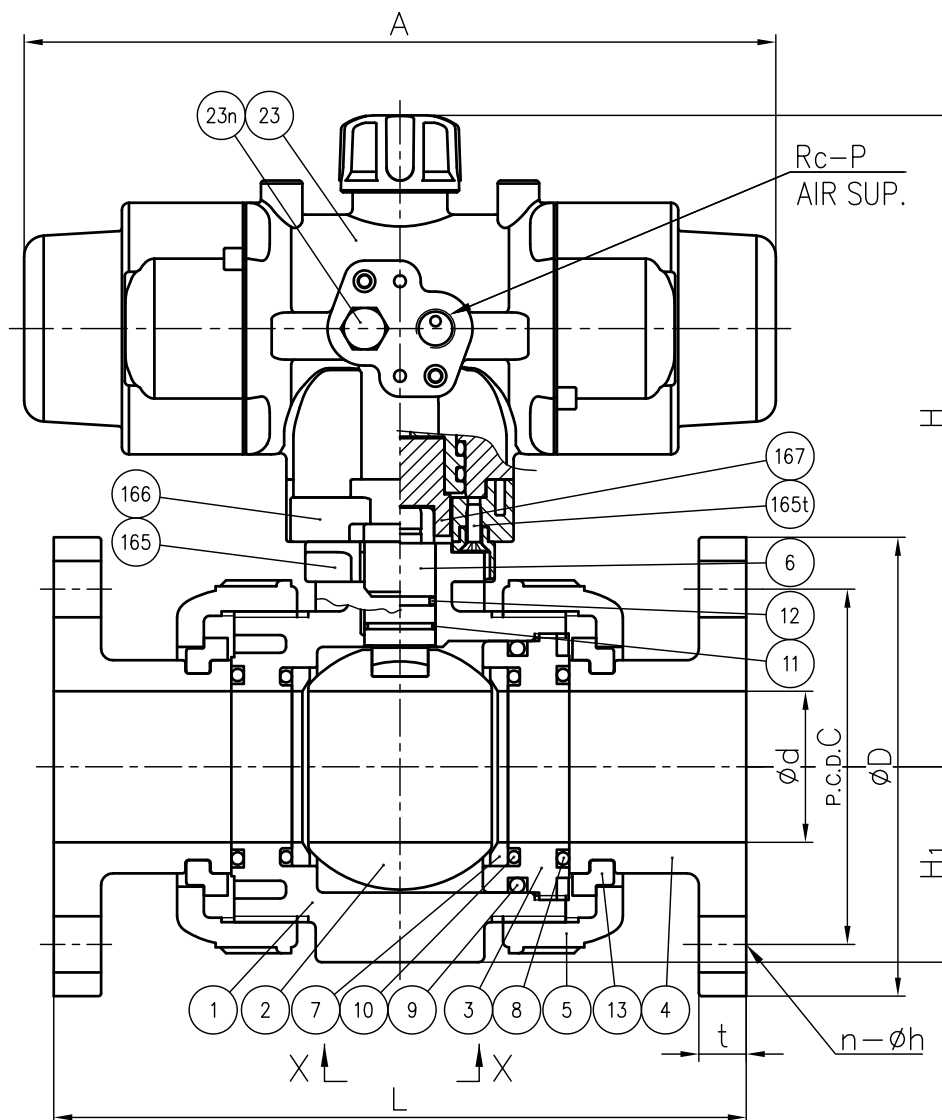
NOTE.

- Operation of permission pressure : 0.4~0.7MPa G
 Air to open; Valve open : Supply
 Valve shut : Exhaust
 Air to shut; Valve open : Exhaust
 Valve shut : Supply
- The shape and appearance of assembly differ a little with nominal size compared to this drawing.

FLANGE END



(Detail of Holes for Metallic Insert)



4a	RING	2	STAINLESS STEEL (SUS304)	Used for C-PVC Body, Threaded End: 1/2"~1"
167	SHAFT ADAPTER	1	STAINLESS STEEL (SUS304)	
166r	CAP (No.166)	4	EPDM	
166b	BOLT (No.166)	4	STAINLESS STEEL (SUS304)	
166	CONNECTOR PLATE	1	PPG	
165t	TAPPING SCREW (No.165)	2	STAINLESS STEEL (SUS304)	
165	BASE PLATE	1	PPG	
23n	NIPPLE	1	PPG	
23e	ENSAT (No.23)	4	STAINLESS STEEL (SUS303)	
23	ACTUATOR	1	PPG etc.	
13	STOP RING	2	PVDF	Used for Flanged End
12	O-RING (E)	1	□EPDM □FKM □Others	
11	O-RING (D)	1		
10	O-RING (C)	2		
9	O-RING (B)	1		
8	O-RING (A)	2		
7	SEAT	2	PTFE	
6	STEM	1	□PVC □C-PVC □PP □PVDF	
5	UNION NUT	2		
4	END CONNECTOR	2		
3	CARRIER	1		
2	BALL	1		
1	BODY	1		
No.	DESCRIPTION	QTY.	MATERIAL	REMARKS

ITEM BALL VALVE (TYPE21-21ALPHA) PNEUMATIC ACTUATED MODEL TYPE AR ASSY
 □ AIR TO OPEN, □ AIR TO SHUT
 ANSI: □ FLANGED END, □ SOCKET END, □ THREADED END
 1/2" (15mm) ~ 2" (50mm)

DRAWN	S.Shimazaki	DATE	SCALE
CHECKED	H.Kawano	APR.22.2020	~
APPROVED	K.Koushou	DRAWING No.	
SPECIAL ORDER No.		IB-AA260AE	

ASAHI YUKIZAI CORPORATION