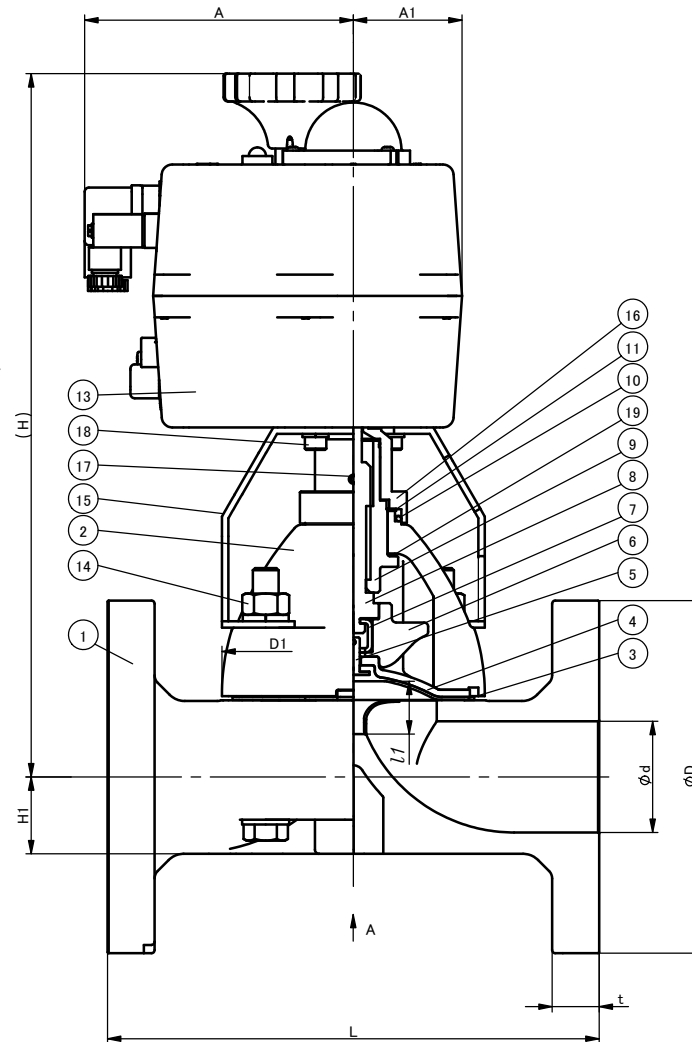
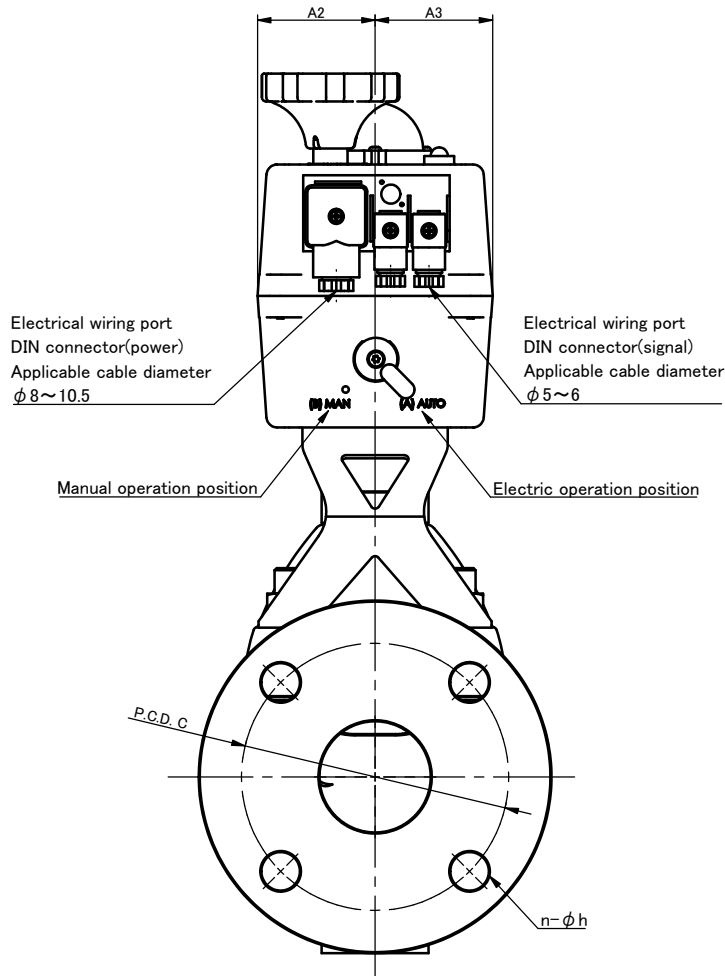
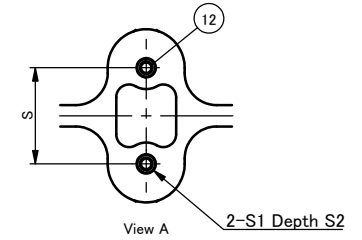


DIMENSIONS TABLE

UNIT : mm

NOMINAL SIZE	d	DIN PN10					D1	L	t	L1 (LIFT)	H	H1	A	A1	A2	A3	S	S1	S2	ACTUATOR TYPE
		D	C	n	h															
15mm	1/2"	16	95	65	4	14	54 × 66	130	12	10	265.7	19.5	130	51	55	55	25	M5	10	J4M-S6
20	3/4	20	105	75	4	14	54 × 66	150	13	10	267.7	17.5	130	51	55	55	25	M5	10	J4M-S6
25	1	25	115	85	4	14	67 × 80	160	13	12	275.2	18.5	130	51	55	55	25	M5	10	J4M-S6
32	1 1/4	32	140	100	4	18	67 × 80	180	16	12	277.5	22.5	130	51	55	55	25	M5	10	J4M-S6
40	1 1/2	40	150	110	4	18	108 × 108	200	20	21	318.5	27.5	130	51	55	55	45	M6	14	J4M-S10
50	2	52	165	125	4	18	123 × 123	230	22	25	332.7	36.0	130	51	55	55	45	M6	14	J4M-S10



NOTE.

The shape and appearance of assembly differ a little with nominal size compared to this drawing.

No.	DESCRIPTION	QTY.	MATERIAL	REMARKS																														
19	THRUST RING	1	SUS304(STAINLESS STEEL)																															
18	BOLT	4	SUS304(STAINLESS STEEL)																															
17	SCREW	2	SUS304(STAINLESS STEEL)																															
16	JOINT	1	SUS304(STAINLESS STEEL)																															
15	STAND	1	SUS304(STAINLESS STEEL)																															
14	BOLT-NUT	4	SUS304(STAINLESS STEEL)																															
13	ACTUATOR	1	POLYAMIDE6 etc.																															
12	ENSAT	2	SUS303(STAINLESS STEEL)																															
11	THRUST RING	1	UHMW-PE																															
10	O-RING	1	EPDM																															
9	SLEEVE	1	C3604(COPPER ALLOY)																															
8	STEM	1	C3604(COPPER ALLOY)																															
7	JOINT	1	SUS304(STAINLESS STEEL)																															
6	COMPRESSOR	1	PVDF																															
5	INSERTED METAL OF DIAPHRAGM	1	SUS304(STAINLESS STEEL)																															
4	CUSHION	1	EPDM	Used for PTFE DIAPHRAGM																														
3	DIAPHRAGM	1	<input type="checkbox"/> EPDM <input type="checkbox"/> PTFE <input type="checkbox"/> Others ()																															
2	BONNET	1	PPG																															
1	BODY	1	<input type="checkbox"/> PVC <input type="checkbox"/> C-PVC <input type="checkbox"/> PP <input type="checkbox"/> PVDF																															
<table border="1"> <thead> <tr> <th>No.</th> <th>DESCRIPTION</th> <th>QTY.</th> <th>MATERIAL</th> <th>REMARKS</th> </tr> </thead> <tbody> <tr> <td>ITEM</td> <td colspan="4">DIAPHRAGM VALVE TYPE 14 ELECTRIC MODEL TYPE J Ass'y Free power supply : AC24-240V DIN PN10 : FLANGED END 15mm (1/2") ~ 50mm (2") OPTION: -</td> </tr> <tr> <td>DRAWN</td> <td>A. Yamamizu</td> <td>DATE</td> <td>SCALE</td> <td></td> </tr> <tr> <td>CHECKED</td> <td>Y. Sato</td> <td>Jan. 17, 2024</td> <td></td> <td></td> </tr> <tr> <td>APPROVED</td> <td>K. Koushou</td> <td colspan="2">DRAWING No.</td> <td></td> </tr> <tr> <td>SPECIAL ORDER No.</td> <td colspan="2">D1-AE011DE</td> <td></td> <td></td> </tr> </tbody> </table>					No.	DESCRIPTION	QTY.	MATERIAL	REMARKS	ITEM	DIAPHRAGM VALVE TYPE 14 ELECTRIC MODEL TYPE J Ass'y Free power supply : AC24-240V DIN PN10 : FLANGED END 15mm (1/2") ~ 50mm (2") OPTION: -				DRAWN	A. Yamamizu	DATE	SCALE		CHECKED	Y. Sato	Jan. 17, 2024			APPROVED	K. Koushou	DRAWING No.			SPECIAL ORDER No.	D1-AE011DE			
No.	DESCRIPTION	QTY.	MATERIAL	REMARKS																														
ITEM	DIAPHRAGM VALVE TYPE 14 ELECTRIC MODEL TYPE J Ass'y Free power supply : AC24-240V DIN PN10 : FLANGED END 15mm (1/2") ~ 50mm (2") OPTION: -																																	
DRAWN	A. Yamamizu	DATE	SCALE																															
CHECKED	Y. Sato	Jan. 17, 2024																																
APPROVED	K. Koushou	DRAWING No.																																
SPECIAL ORDER No.	D1-AE011DE																																	
ASAHI YUKIZAI CORPORATION																																		