

Diaphragm Valve Type 15 (Electric Actuated Type H) 125mm, 150mm (5inch, 6inch)

Body Material

PVC
PP
PVDF

Diaphragm Material

PTFE
EPDM
FKM

Connection Standard

JIS 10K · JIS 5K
ANSI CLASS150
DIN PN10

Power Source

Single-Phase
AC100V/110V/200V/220V

Equipment

Manual Operation Mechanism
Space Heater
Output Contact Limit Switches
Indicator



FEATURES

- In addition to the ordinary On-Off Limit Switch, additional Limit Switch is built in for safety.
- Manual Operating Handle is provided as a Standard Equipment. The Handle cannot be turned during electric operation due to the planetary Gear Mechanism.

OPTIONAL EQUIPMENT

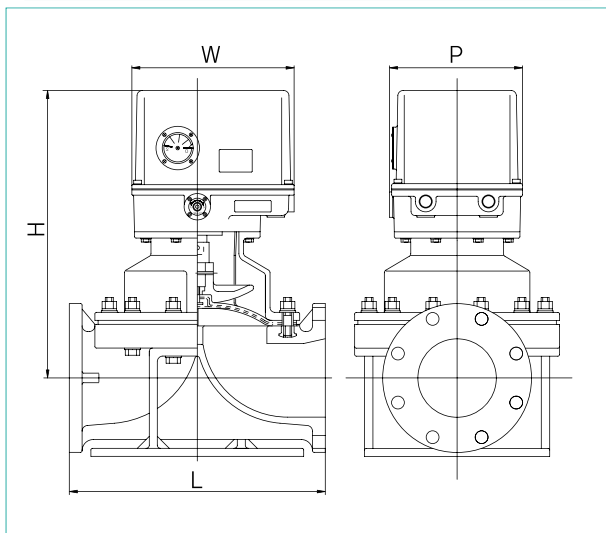
Combination No.	1
Space Heater	●
Output Contact Limit Switches	●

● Standard Equipment

ACTUATOR SPECIFICATION

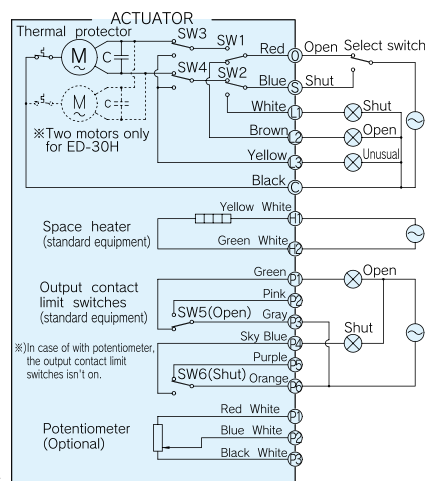
Nominal Size mm(inch)	125(5inch)	150(6inch)
Actuator Type	ED-30H	
Cycle Time 50/60Hz(seconds)	48/40	
Motor Output(W)	140	
Motor Starting Current(A) 50/60Hz	100V	5.00/4.80
	110V	1.40/1.46
	200V	2.50/2.40
	220V	0.70/0.70
Motor Rated Current(A) 50/60Hz	100V	3.00/3.00
	110V	2.63/2.40
	200V	1.50/1.50
	220V	1.10/1.10
Number of revolutions of manual operating handle	128	
Limit Switch Capacity	AC 250V 3A	
Protective Structure	JIS C 0920 drip-proof type	
Cable Connector Nominal Size	4-G 3/4	
Motor Pole(P)	4	
Motor Insulation	E Class	
Motor Time Rating(minute)	30	

DIMENSIONS FIGURE



SCHEMATIC DIAGRAM

WIRING DIAGRAM

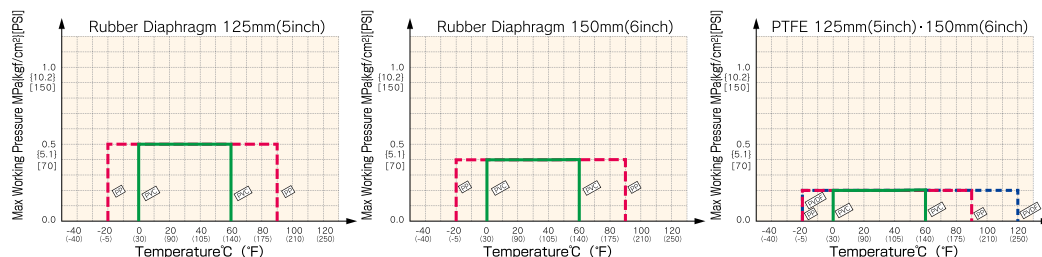


Switching Chart

SW1 Open limit	Shut	Open	OFF by full open
SW3 Open Double Safety	Shut	Open	Overrun OFF
SW5 Open contact	Shut	Open	ON by full open between P1 and P3
SW2 Shut limit	Shut	Open	OFF by full shut
SW4 Shut Double Safety	Shut	Open	Overrun OFF
SW6 Shut contact	Shut	Open	ON by full shut between P4 and P6

NOTE. This circuit diagram shows that the position of the opening action has come to an end.

WORKING PRESSURE VS. TEMPERATURE



DIMENSIONS TABLE

JIS, ANSI, DIN		Unit:mm(inch)	
Nominal Size		125 (5)	150 (6)
L	JIS	410 (16.14)	480 (18.90)
	DIN	400 (15.75)	480 (18.90)
	ANSI	410 (16.14)	480 (18.90)
H		510 (20.08)	550 (21.65)
W		310 (12.20)	310 (12.20)
P		254 (10.00)	254 (10.00)