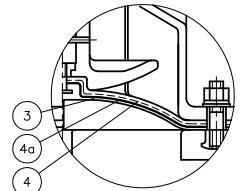
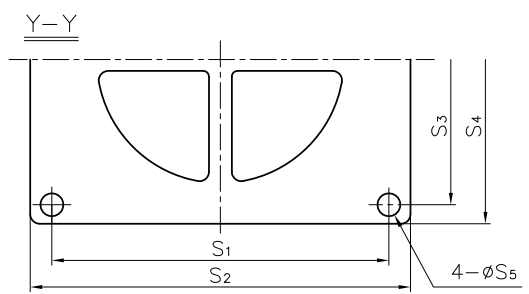


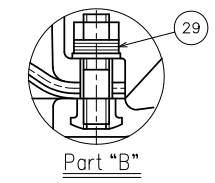
In case of PTFE Diaphragm.



In case of PTFE Diaphragm with Cushion Cover.



In case of PVDF Body



NOTE.

- Diaphragms except EPDM and PTFE are available in FKM, VIFLON-C (FKM-C), VIFLON-F (FKM-F), CSM and NBR when required.
- The shape and appearance of assembly differ a little with nominal size compared to this drawing.

No.	DESCRIPTION	QTY.	MATERIAL	REMARKS
1a	INSERTED NUT	-	STAINLESS STEEL (SUS304) COPPER ALLOY (C3604)	Used for PVDF Body Used for PVC,PP Body
113a	BOLT (F)	4	STAINLESS STEEL (SUS304)	
113	SPACER	1	STEEL (SS400)	Epoxy Coat.
75	BOLT (B)	4	STAINLESS STEEL (SUS304)	
74	O-RING (H)	1	NBR	
73	ACTUATOR	1	CAST IRON (FC250) etc.	Epoxy Coat.
72	STEM (B)	1	STAINLESS STEEL (SUS304)	
71	BONNET (B)	1	CAST ALUMINIUM ALLOY (AC4C)	Epoxy Coat.
56	STAND (A)	1	CAST ALUMINIUM ALLOY (AC4C)	Epoxy Coat.
29	CONICAL SPRING WASHER	-	STAINLESS STEEL (SUS304)	Used for PVDF Body
24	BOLT · NUT (A)	-	STAINLESS STEEL (SUS304)	
23	STUD BOLT · NUT	-	STAINLESS STEEL (SUS304)	
7	COMPRESSOR PIN	1	STAINLESS STEEL (SUS304)	
5	COMPRESSOR	1	Chromized CAST IRON (FC200)	
4a	CUSHION COVER	1	□Nothing □PVDF	Used for PTFE Diaphragm
4	CUSHION	1	EPDM	Used for PTFE Diaphragm
3a	INSERTED METAL OF DIAPHRAGM (A)	1	STAINLESS STEEL (SUS304)	
3	DIAPHRAGM	1	□EPDM □PTFE □Others ( )	
1	BODY	1	□PVC □PP □PVDF	

DIMENSIONS TABLE

NOMINAL SIZE	d	JIS 10K															t					ACTUATOR MODEL				
		D	C	n	h	L	PVC	PP	PVDF	D1	D2	l	A	A1	A2	A3	H	H1	S	S1	S2	S3	S4	S5	RETURN BY	RETURN BY
																									AUTOMATIC TYPE	MANUAL TYPE
200mm	8"	196	330	290	12	23	570	28	32	430	460	95	357	80	293	150	802	179	20	390	440	330	380	23	LTMD-01	LTKD-01
250	10	247	400	355	12	25	680	30	37	540	460	128	375	80	328	160	969	215	23	470	540	390	460	25	LTMD-02	LTKD-02

UNIT:mm

DIAPHRAGM VALVE (TYPE 72) ELECTRIC ACTUATED S TYPE ASSY  
JIS 10K : FLANGED END  
200mm (8") · 250mm (10")

ITEM	DIAPHRAGM VALVE (TYPE 72) ELECTRIC ACTUATED S TYPE ASSY JIS 10K : FLANGED END 200mm (8") · 250mm (10")		
DRAWN	M.Iwakiri	DATE	SCALE
CHECKED	H.Kawano	AUG.20.2019	~
APPROVED	K.Koushou	DRAWING No. DF-AE001JE	
SPECIAL ORDER No.	ASAHI YUKIZAI CORPORATION		